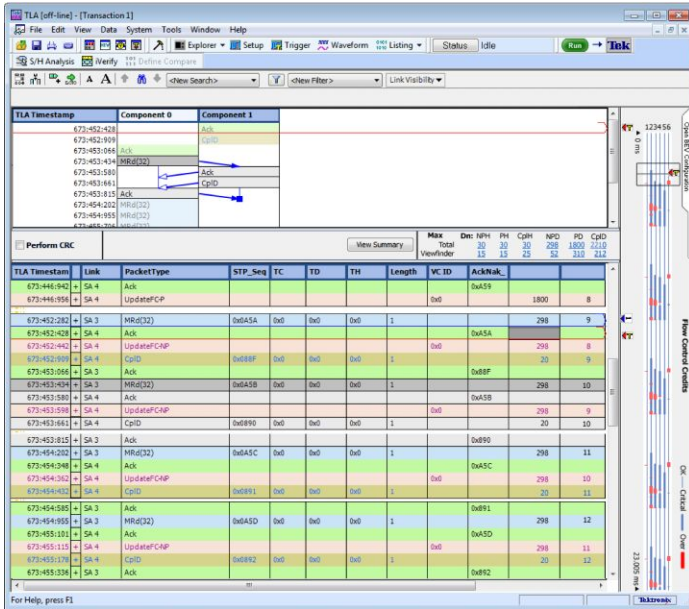


Tektronix PCI Express Logic Protocol Analyzer

TLA7SA00 Series Datasheet



The TLA7SA00 Series logic protocol analyzer modules provide an innovative approach to PCI Express validation that spans all layers of the protocol from the physical layer to the transaction layer. Feature rich software provides improved information density for viewing statistical summary and protocol analysis using innovative Transaction and Summary Profile windows. Hardware capabilities including hardware acceleration, OpenEYE, ScopePHY, and FastSYNC provide fast access to data and helps shorten the time it takes to build confidence in the test system. Powerful trigger and filtering capabilities provide the ability to quickly focus on the data of interest. A complete suite of probing solutions targeted for various form factors and applications.

Notice to EU customers

This product is not updated to comply with the RoHS 2 Directive 2011/65/EU and will not be shipped to the EU. Customers may be able to purchase products from inventory that were placed on the EU market prior to July 22, 2017 until supplies are depleted. Tektronix is committed to helping you with your solution needs. Please contact your local sales representative for further assistance or to determine if alternative product(s) are available. Tektronix will continue service to the end of worldwide support life.

Key performance specifications

- PCI Express Gen1, Gen2, and Gen3 Protocol to Physical Layer Analysis for link widths from x1 through x16 with up to 8.0 GT/s acquisition rates.
- Industry's deepest 8 GB memory/module (16 GB memory, x16 link width) increases the chances of capturing an error and the fault that caused the error.

Key features

- Comprehensive PCI Express probing solutions, including midbus, slot interposer, and solder-down probes.
 - Nonintrusive probing that uses OpenEYE technology incorporating automatic tuning equalization circuitry to allow probing anywhere on the channel and ensures accurate data capture in PCI Express systems with channel lengths up to 24 in. and two connectors.
 - Single-click calibration process calibrates the analyzer and probes to the target BER. Calibration results for analyzer/probe sets are remembered from one session to another.
 - ScopePHY provides the ability to quickly connect any of the PCI Express midbus, slot interposer, or solder-down probes to a high-performance oscilloscope providing a more detailed analog view of the PHY Layer.
- Shorten time to gain confidence in the test system setup.
 - Front-panel LEDs provide status information such as link speed, symbol lock, and link activity.
 - Auto-configure sets up the logic protocol analyzer system to be ready for data acquisition quickly.
 - FastSYNC tracks the Link as it transitions in and out of ASPM Power states such as L0s, regardless of electrical Idle duration.
 - Real-time statistics help observe link health and behavior over time.
- Powerful trigger-state machine spans all layers of the protocol.
 - 8 States
 - 8 Packet recognizers
 - 4 Symbol sequence recognizers
 - 4 Counter/Timers
 - 4 Event flags
 - Conditional storage
 - Real-time filtering
- HW accelerated search and data displays provide immediate visibility of data regardless of record length.

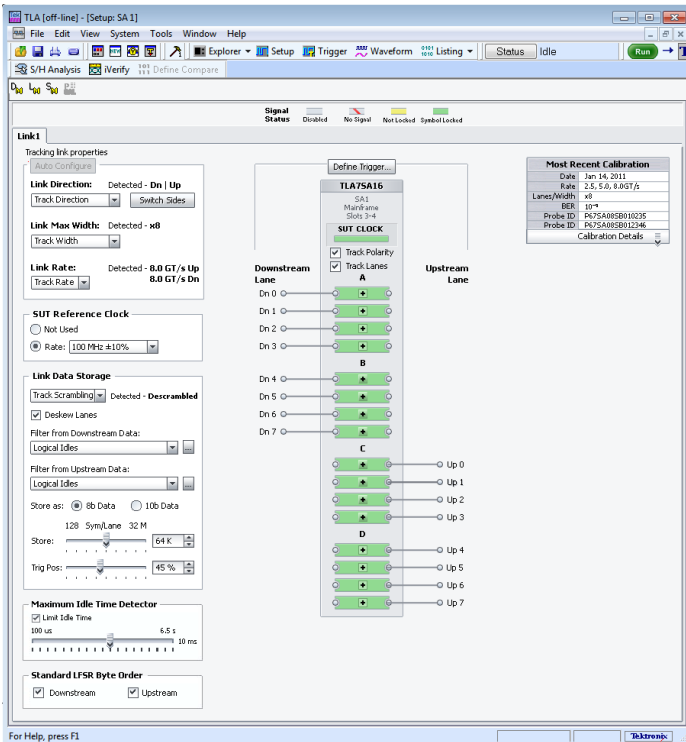
- Information density for rapid data analysis
 - The Transaction window provides visibility into protocol behavior at the packet and transaction level interspersed with physical layer activity.
 - Innovative Bird's Eye view provides a high-ground visibility of system issues involving flow control.
 - The Summary Profile window helps ascertain the health of the system and identify patterns of interest such as errors, TLPs, DLLPs, ordered sets.
- Multibus visibility for system-level debug
 - Analyze complete system interactions with time-correlated, multibus analysis on a single display on a single mainframe. For example, tracing memory access from PCI express to DDR memory or monitor multiple PCIe links on a PCIe switch.
 - Cross Triggering and a common global time stamp enables accurate and efficient debugging by showing exactly what was happening on one bus relative to another at any given instant in time.



TLA7SA16 Logic Protocol Analyzer module.

Applications

- PCI Express debug from Protocol layer to Physical layer
 - Silicon validation
 - Computer system validation
 - Embedded system debug and validation
- Processor/Bus debug and verification
- Embedded software integration, debug, and verification



The TLA7SA00 series logic protocol analyzer Setup window provides a quick overview of link connection status.

PCI Express debug and analysis spanning Physical to Transaction-layer with feature-rich hardware

PCI Express 3.0 introduces new challenges for validation engineers. Time-to-market pressures require a solution that can quickly pinpoint problems. The TLA7SA00 Series logic protocol analyzer modules provide an innovative approach to PCI Express validation that spans all layers of the protocol from the Physical layer to the Transaction layer.

Reduce the time to information by viewing and searching up to 16 GB deep memory in just seconds with rapid display updates enabled by our industry-leading hardware acceleration.

Features such as auto-training, auto-tracking, front-panel LED lane status, single-click calibration, allow the logic protocol analyzer to "wire" itself automatically which shortens the time it takes for users to build confidence in the test system.

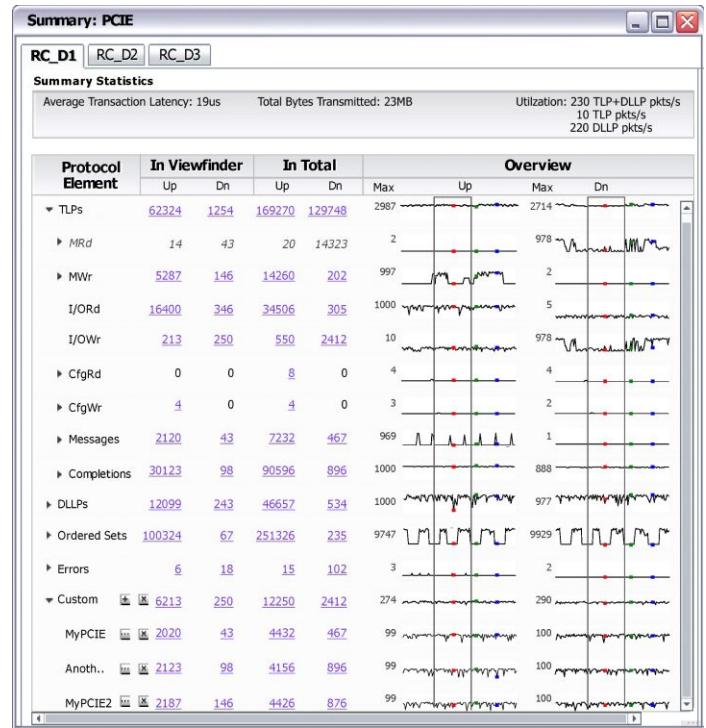
Quickly trigger on patterns of interest with powerful trigger capabilities that span across all protocol layers. Real-time filtering provides the ability to filter unwanted data and use the acquisition memory more efficiently by storing only transactions of interest.

Elusive power state anomalies pertaining to entry into and exit from electrical idle and ASPM states such as L0s to L0 are easily addressed by FastSYNC technology. It ensures quick re-synchronization of the logic protocol analyzer with the PCI Express FTS ordered sets regardless of the duration of electrical Idle time. This capability is unique compared to other solutions where the L0s to L0 re-synchronization time is specified only over a short electrical idle time of 2 μ s or less.

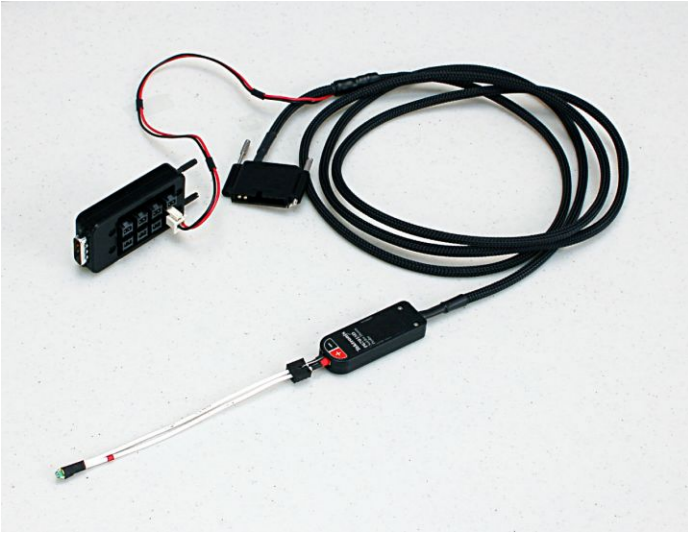
Innovative data displays for accelerated time to information

The new PCI Express software helps view information in a hierarchical and rich format. Protocol information can be expanded and collapsed to rapidly display or hide information as needed.

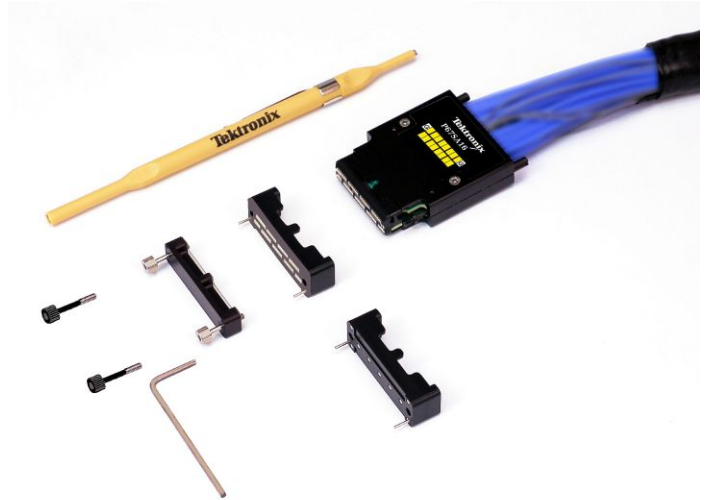
Quickly ascertain the health of the system and identify patterns of interest (errors, specific transactions, ordered sets) with statistical summary and data graphs using the Summary Profile window. Summary statistics include useful information such as average transaction latency, total bytes transmitted, and bus utilization.



Summary Profile window



P67SA01SD – single differential input PCI Express solder-down probe, shown with Option 1P power adapter.



P67SA16 – x8 PCI Express Midbus probe and accessories. (x4 Midbus probe also available)

With ScopePHY, quickly connect any of the probe connector outputs to an oscilloscope using the P67UHDSMA probe lead set to gain further insight into the PHY layer. Tektronix-supplied S-parameters of the probe and module configure the DSP filters of Tektronix oscilloscope to show the PCI Express link data eye at the probe tip.



P67SA16S – x16 PCI Express Slot Interposer probe. (x8, x4, x1 Slot Interposer probes also available)



P67UHDSMA – x2 PCI Express probe lead set for P67SA00 probe connections to oscilloscopes.

Specifications

All specifications are guaranteed unless noted otherwise. All specifications apply to all models unless noted otherwise.

General specifications

Acquisition rate with frequency margin	8 GT/s (+5% to -10%)
	5 GT/s ($\pm 10\%$)
	1.5 GT/s ($\pm 10\%$)
<hr/>	
Number of lanes	
TLA7SA08	8 differential inputs, x4
TLA7SA16	16 differential inputs, x8
<hr/>	
Record length	160 M symbols translates into 160 ms at 8 GT/s, 320 ms at 5 GT/s, or 640 ms at 2.5 GT/s at 100% bus utilization.
TLA7SA08	160 M symbols per differential input, 4 GB physical memory total
TLA7SA16	160 M symbols per differential input, 8 GB physical memory total (16 GB physical memory for a x16 configuration)
<hr/>	
Time stamp range	292 hours
<hr/>	
Time stamp	50 bits at 936 ps resolution
<hr/>	
Clocking/acquisition modes	
TLA module without SSC (spread spectrum clocking)	
External reference clock	100 MHz $\pm 10\%$ with or without SSC
External reference clock frequency tolerance	± 300 ppm
<hr/>	
Number of mainframe instrument slots required per TLA series module	2

Module configuration requirements

Bi-directional link widths per module	Module	X1	X4	X8	X16
	TLA7SA08	1	1	0	0
	TLA7SA16	1	1	1	2

Input specifications (with P67SA00 series probes)

Capacitive loading	Please refer to the specifications in the Tektronix Logic Analyzer Solutions for PCI Express 3.0 manual, Tektronix part number, 077-0400-xx.
<hr/>	
Minimum data eye	Please refer to the specifications in the Tektronix Logic Analyzer Solutions for PCI Express 3.0 manual, Tektronix part number, 077-0400-xx.

Acquisition system (with P67SA00 series probes)

Dynamic link width switch latency	Consumes up to 48 symbols (typical)
Dynamic link rate switch latency	<200 ns EIDLE time (typical) (with either internal reference clock or spread spectrum using external reference clock)
Maximum time to change to Gen1 rate	2 TS1
Maximum time to change to Gen2 rate	1 EIEOS + 3 TS1
Maximum time to change to Gen3 rate	1 EIEOS + 6 TS1
Number of FTS packets required to resync following L0s exit	Assumes an EIDLE ranging from 20 ns to 2 ms, with either internal reference clock or spread spectrum using external reference clock
Gen1	4 FTS (typical)
Gen2	1 EIEOS + 6 FTS (typical)
Gen3	1 EIEOS + 4 FTS (typical)

Filter specifications

Ordered sets	TS1, TS2, SKP, EIOS, FTS, EIEOS, SDS
DLLPs	Ack, Nak, PM, Vendor specific, FC1, FC2, UpdateFC
TLPs	MRd, MRdL, MWr, IORd, IOWr, CfgRd0, CfgWr0, CfgRd1, CfgWr1, Msg, MsgD, Cpl, CplD, CPILk, CPIDLk, FetchAdd, Swap, CAS, LPrfx, EPrfx

Trigger system

Independent Trigger states	8
Trigger sequence rate	Operates at symbol rate time (Gen1, Gen2, Gen3)
Maximum independent If/Then clauses per state	8
Maximum number of events per If/Then clause	8
Maximum number of actions per If/Then clause	8
Maximum number of event counters per state	2
Event counter range	31 bit
Number of TLP packet recognizers per link direction	4
Number of DLLP packet recognizers per link direction	4
Number of sequence recognizers	4

Trigger system

Number of symbols per sequence recognizer	16
Number of link event recognizers	4
Number of global counters/timers	4
Trigger event types	Anything, TLP, DLLP, Sequence, Link Event, Counter, Timer
Trigger action types	Trigger, Trigger All Modules, Wait for System Trigger, Goto, Increment Counter, Decrement Counter, Reset Counter, Start Timer, Reset Timer, Reset and Start Timer, Stop Timer, Reset and Stop Timer, Set Signal Out, Clear Signal Out, Arm Module, Start Storage, Stop Storage, Do Nothing
Counter/timer range	48 bit (~5 days with 3.6 ns resolution)
Counter/timer test latency	68 ns
Storage control (data qualification)	By state (start/stop)

Physical characteristics

Dimensions

Height	262 mm (10.3 in.)
Width	61 mm (2.4 in.)
Depth	381 mm (15.0 in.)

TLA7SA08 weight

Net	2.84 kg (6.25 lb.)
Shipping	6.94 kg (15.3 lb.)

TLA7SA16 weight

Net	3.20 kg (7.06 lb.)
Shipping	7.30 kg (16.1 lb.)

PCI Express midbus differential data probes

General

Characteristic	P67SA08	P67SA16	P67SA16G2
Number of differential pairs	8	16	16
Lane width	x4	x8	x8
Recommended use	Recommended where signal integrity is critical	Recommended where signal integrity is critical	Recommended for midbus probing of PCIe Gen2
Attachment to target system	Compression technology	Compression technology	-
Probe loading AC/DC	Refer to the Tektronix Logic Protocol Analyzer Solutions for PCI Express 3.0 Instruction manual, Tektronix part number 077-0400-xx.		
Cable length	1.8 m (6 ft.)		

Midbus probe recommended configurations

	x1	x4	x8	x16
	1 P67SA08 1 TLA7SA08	1 P67SA08 1 TLA7SA08	1 P67SA16 1 TLA7SA16	2 P67SA16 2 TLA7SA16

PCI Express slot interposer probes

General	Characteristic	P67SA04S	P67SA08S	P67SA16S
	Number of differential pairs	8	16	32
	Lane width	x4	x8	x16
	Recommended use	Recommended for platforms with no midbus footprints and the PCI Express slot is the only probe access point		
	Attachment to target system	PCI Express slot		
	Probe loading AC/DC	Refer to the Tektronix Logic Protocol Analyzer Solutions for PCI Express 3.0 Instruction manual, Tektronix part number 077-0400-xx.		
	Cable length	1.8 m (6 ft.)		

Slot interposer probe recommended configurations	x1	x4	x8	x16
	1 P67SA04S 1 TLA7SA08 1 013-0375-xx	1 P67SA04S 1 TLA7SA08	1 P67SA08S 1 TLA7SA16	1 P67SA16S 2 TLA7SA16

PCI Express solder down and UHDSMA probes

General	Characteristic	P67SA01SD	P67UHDSMA
	Probe type	PCI Express differential solder-down probe	Probe lead set for PCI Express P67SA00 series probe connections to high-bandwidth oscilloscopes
	Number of differential pairs	1	4
	Lane width	1/2 lane	x2
	Recommended use	Recommended for platforms with no midbus footprint, PCI Express slot; or where space is limited	Recommended for use with any of the P67SA00 series probe connections to high-bandwidth oscilloscopes
	Attachment to target system	Solder down	-
	Probe loading AC/DC	Refer to the Tektronix Logic Protocol Analyzer Solutions for PCI Express 3.0 Instruction manual, Tektronix part number 077-0400-xx.	-
	Cable length	1.8 m (6 ft.)	0.3 m (1 ft.)

Solder-down probe recommended configuration	x1	x4	x8	x16
	2 P67SA01SD 1 TLA7SA08	8 P67SA01SD 1 TLA7SA08	16 P67SA01SD 1 TLA7SA16	32 P67SA01SD 2 TLA7SA16

Ordering information

TLA7SAxx PCI Express logic protocol analyzer modules	Includes: Statement of Compliance, one-year warranty (return to Tektronix), reference clock cable (672-6285-xx), and reference clock jumper cable (174-5392-xx)
	Probes and mainframes must be ordered separately.
TLA7SA08	8 Differential Inputs, x4 Logic Protocol Analyzer module, 8 GT/s acquisition, 4 GB physical memory
TLA7SA16	16 Differential Inputs, x8 Logic Protocol Analyzer module, 8 GT/s acquisition, 8 GB physical memory

TLA7ACxx module options

Opt. 88	Factory install
Opt. L0	English manual
Opt. L5	Japanese manual
Opt. L10	Russian manual
Opt. 99	No manual

Service options

Opt. C3	Calibration Service 3 Years
Opt. C5	Calibration Service 5 Years
Opt. CA1	Single Calibration or Functional Verification
Opt. R3	Repair Service 3 Years (including warranty)
Opt. R3DW	Repair Service Coverage 3 Years (includes product warranty period). 3-year period starts at time of instrument purchase
Opt. R5	Repair Service 5 Years (including warranty)
Opt. R5DW	Repair Service Coverage 5 Years (includes product warranty period). 5-year period starts at time of instrument purchase

Accessories

Accessory	Description
P67SA08	8 Differential pairs PCI Express Midbus probe and accessories Includes: Statement of compliance, (2) 8-channel retention mechanisms, velcro cable managers, probe instruction manual
P67SA16	16 Differential pairs PCI Express Midbus probe and accessories Includes : Statement of compliance, (2) 16-channel retention mechanisms, velcro cable managers, probe instruction manual
P67SA16G2	16 Differential pairs PCI Express Midbus probe and accessories for PCIe Gen2 Includes : Statement of compliance, (2) 16-channel retention mechanisms, velcro cable managers, probe instruction manual
P67SA04S	x4 PCI Express Slot Interposer probe and accessories Includes: Statement of compliance, velcro cable managers, probe instruction manual
P67SA08S	x8 PCI Express Slot Interposer probe and accessories Includes: Statement of compliance, velcro cable managers, probe instruction manual
P67SA16S	x16 PCI Express Slot Interposer probe and accessories Includes: Statement of compliance, velcro cable managers, probe instruction manual
P67SA01SD	Single Differential Input PCI Express Solder-down probe Includes: Statement of compliance, velcro cable managers, probe instruction manual Option 1P: Probe power adapter (1 required for every eight (8) P67SA01SD probes)
P67UHDSMA	x2 PCI Express Probe lead set for P67SA00 probe connections to oscilloscopes

Probe accessories

P67SA00 series midbus probes standard accessories

Description	P67SA08		P67SA16	
	Qty. per probe	Part number	Qty. per probe	Part number
Retention mechanism	1	020-4008-xx	1	020-4016-xx
Probe adjustment tool	1	003-1890-xx	1	003-1890-xx
Velcro cable manager (bag of 2)	1	346-0300-xx	1	346-0300-xx

P67SA01SD Solder-down standard accessories

Description	Qty. per probe	Part number
TriMode™ Long Reach solder tip	1	P75TLRST
Storage case	1	016-2009-xx
Solder tip tape (strip of 10)	1	006-8237-xx
1 - .004 wire / 1 - .008 wire / 1 - SAC305 Solder (package of 3 bobbins)	1	020-2754-xx
Hook and loop fastening straps and dots	1	016-1953-xx
Installation sheet	1	071-2503-xx

P67SA01SD Solder-down required accessories

See the Solder-down probe configuration for required quantities.

Descripton	Qty.	Part number
Power adapter	1	870-0509-xx

**P67SA01SD Solder-down
recommended accessories**

Description	Qty.	Part number
Bullet removal tool	1	003-1896-xx
Replacement bullet contacts	Package of 4	003-0359-xx



Tektronix is registered to ISO 9001 and ISO 14001 by SRI Quality System Registrar.

ASEAN / Australasia (65) 6356 3900
Belgium 00800 2255 4835*
Central East Europe and the Baltics +41 52 675 3777
Finland +41 52 675 3777
Hong Kong 400 820 5835
Japan 81 (3) 6714 3086
Middle East, Asia, and North Africa +41 52 675 3777
People's Republic of China 400 820 5835
Republic of Korea +822 6917 5084, 822 6917 5080
Spain 00800 2255 4835*
Taiwan 886 (2) 2656 6688

Austria 00800 2255 4835*
Brazil +55 (11) 3759 7627
Central Europe & Greece +41 52 675 3777
France 00800 2255 4835*
India 000 800 650 1835
Luxembourg +41 52 675 3777
The Netherlands 00800 2255 4835*
Poland +41 52 675 3777
Russia & CIS +7 (495) 6647564
Sweden 00800 2255 4835*
United Kingdom & Ireland 00800 2255 4835*

Balkans, Israel, South Africa and other ISE Countries +41 52 675 3777
Canada 1 800 833 9200
Denmark +45 80 88 1401
Germany 00800 2255 4835*
Italy 00800 2255 4835*
Mexico, Central/South America & Caribbean 52 (55) 56 04 50 90
Norway 800 16098
Portugal 80 08 12370
South Africa +41 52 675 3777
Switzerland 00800 2255 4835*
USA 1 800 833 9200

* European toll-free number. If not accessible, call: +41 52 675 3777

For Further Information. Tektronix maintains a comprehensive, constantly expanding collection of application notes, technical briefs and other resources to help engineers working on the cutting edge of technology. Please visit www.tek.com.

Copyright © Tektronix, Inc. All rights reserved. Tektronix products are covered by U.S. and foreign patents, issued and pending. Information in this publication supersedes that in all previously published material. Specification and price change privileges reserved. TEKTRONIX and TEK are registered trademarks of Tektronix, Inc. All other trade names referenced are the service marks, trademarks, or registered trademarks of their respective companies.

