



Concentric Technology Solutions Inc

Testing Solutions for the Wireless Industry

TC-5915A Shield Box



Features

- Reliable High RF Shielding up to 6 GHz
- Manual operation
- Easily customizable to meet various test needs
- Shock Absorbers on lid



Specifications

Mechanical Specification

Dimension	
Inside	220(W) x 280(D) x 170(H) mm
Outside	325(W) x 475(D) x 224(H) mm, lid closed. 442(H) mm, lid open
Weight	approx. 9 kg
*Packing	
Size	528(W) x 460(D) x 335(H) mm
Weight	approx. 10 kg

*The size or weight of a package may vary on how to pack a package.

Typical RF Shielding

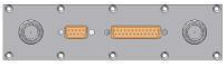
The shield effectiveness below is measured when the blank panel is mounted; other I/O interface panel results a different shielding effectiveness of the shield box.

100 to 2000 MHz	> 70 dB
2000 to 3000 MHz	> 70 dB
3000 to 6000 MHz	> 50 dB

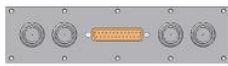
Ordering Information

Order Number	Description
	Shield Box
TC-5915A	Operating Manual Test Report RG400S, N(m) to N(m) cable, 1 m, 1 pc

I/O Interface Panel

	Order Number	Configuration
 Data Interface Panel	M591502B	<ul style="list-style-type: none"> *Shielding Effectiveness:>70 dB from 0.1 to 2 GHz, >60 dB from 2 to 3 GHz, >55 dB from 3 to 6 GHz DB9(p) outside and DB9(s) inside, 1000 pF Pi filter DB25(p) outside and DB25(s) inside, 1000 pF Pi filter 2 N(f) outside and SMA(f) inside Data line Capacity : 100 VDC, 3 Amps max.

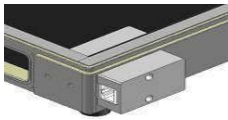
SPECIFICATIONS SUBJECT TO CHANGE WITHOUT PRIOR NOTICE



Data Interface Panel

M591505A

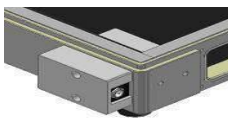
- *Shielding Effectiveness:>70 dB from 0.1 to 2 GHz, >60 dB from 2 to 3 GHz, >55 dB from 3 to 6 GHz
- DB25(p) outside and DB25(s) inside, 1000 pF Pi filter
- 4 N(f) outside and SMA(f) inside
- Data line Capacity : 100 VDC, 3 Amps max.



RJ-45 Interface Panel

M591531A

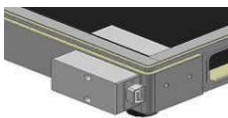
- *Shielding Effectiveness:>60 dB from 0.1 to 3 GHz
- RJ-45 outside and inside, 10pF Pi filter, for LAN
- Data line Capacity : 1.5 Amps max.



DC Power interface Panel

M591532A

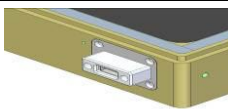
- *Shielding Effectiveness:>70 dB from 0.1 to 2 GHz, >60 dB from 2 to 3 GHz, >55 dB from 3 to 6 GHz
- DC Power Jack outside and inside
- Data line Capacity : 100 VDC, 3 Amps max.



DB9 Interface Panel

M591533A

- *Shielding Effectiveness:>70 dB from 0.1 to 2 GHz, >60 dB from 2 to 3 GHz, >55 dB from 3 to 6 GHz
- DB9(p) outside and DB9(s) inside, 1000 pF Pi filter
- Data line Capacity : 100 VDC, 3 Amps max.



USB Interface Panel




M591534B

- *Shielding Effectiveness:>60 dB from 0.1 to 6 GHz
- USB A(p) 2.0, 10 pF Pi filter
- Data line Capacity : 1 Amps max. (Frequency range : 200 MHz ~ 5.8 GHz)
- ※ Only for USB to USB Connection

*Each shielding effectiveness is measured when each I/O interface panel, which is shown above, is mounted.

I/O Interface

Customized I/O Interface panels are available. Please contact us for more information.

I/O Interface	Order Number	Typical Data Rate / Line Voltage	*Typical Shielding
 DB25, 1000 pF Pi Filter	3409-0009-1	3 Mbps	>70 dB from 0.1 to 2 GHz >60 dB from 2 to 3 GHz >55 dB from 3 to 6 GHz
 DB25, 100 pF Pi Filter	3409-0014-1	10 Mbps	>70 dB from 0.1 to 2 GHz >60 dB from 2 to 3 GHz >55 dB from 3 to 6 GHz
 DB9, 1000 pF Pi Filter	3409-0008-1	3 Mbps	>70 dB from 0.1 to 2 GHz >60 dB from 2 to 3 GHz >55 dB from 3 to 6 GHz

SPECIFICATIONS SUBJECT TO CHANGE WITHOUT PRIOR NOTICE



	3409-0010-1	10 Mbps	>70 dB from 0.1 to 2 GHz >60 dB from 2 to 3 GHz >55 dB from 3 to 6 GHz
DB9, 100 pF Pi Filter			
	3409-0018A-3	480 Mbps	>60 dB from 0.1 to 6 GHz
USB A(p) 2.0, 10 pF Pi Filter			
	3409-0022A	250 Mbps	>60 dB from 0.1 to 3 GHz
RJ-45, 10 pF Pi Filter			
	3409-0004A	50 VDC, 3 Amps max	>70 dB from 0.1 to 2 GHz >60 dB from 2 to 3 GHz >55 dB from 3 to 6 GHz
DC Power Adaptor, Jack Type			
	3409-0005A	50 VDC, 50 VDC, 10 Amps max	>70 dB from 0.1 to 2 GHz >60 dB from 2 to 3 GHz >55 dB from 3 to 6 GHz
DC Power Adaptor, Banana Jack Type			
		250 VAC, 7 Amps max	>70 dB from 0.1 to 2 GHz >60 dB from 2 to 3 GHz >55 dB from 3 to 6 GHz
AC Power Adaptor			

*Each shielding effectiveness is measured when each I/O interface panel, which is shown above, is mounted.