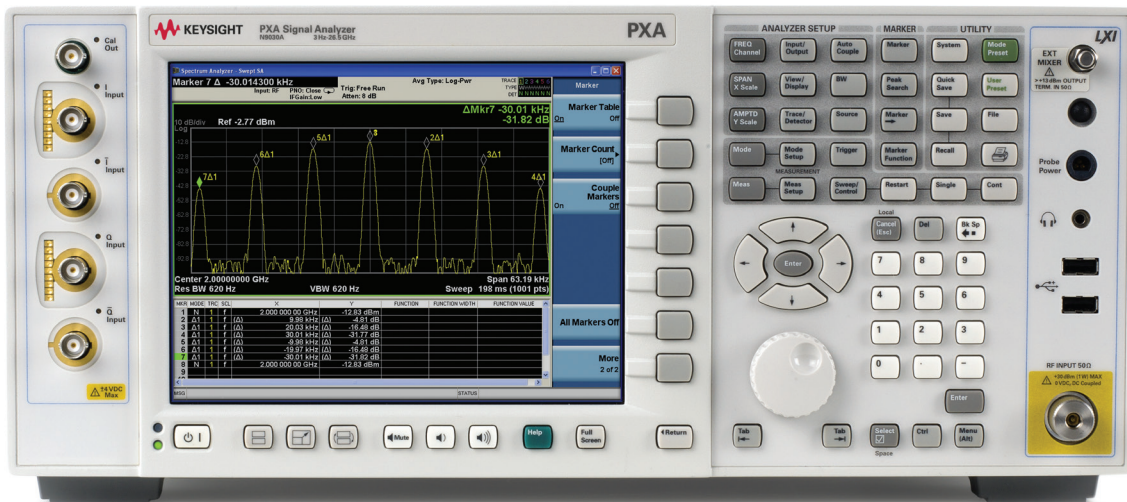


Keysight Technologies GSM/EDGE/EVO X-Series Measurement Application N9071A & W9071A

Technical Overview



GSM/EDGE/EVO Measurement Application

- Measure GSM, EDGE, and EDGE Evolution RF transmitter performance, including multi-carrier base transceiver stations (MC-BTS)
- Test voice services over adaptive multi-user channels on one slot (VAMOS) enabled transmitters
- Perform one-button transmitter tests with pass/fail limit per 3GPP standard
- Use hardkey/softkey manual user interface or SCPI remote user interface
- Leverage built-in, context-sensitive help
- Move application between X-Series signal analyzers with transportable licensing

The GSM/EDGE/EVO measurement application transforms the X-Series signal analyzers into standards-based GSM, EDGE, and EDGE-Evolution transmitter testers by adding fast one-button RF conformance measurements to help you design, evaluate, and manufacture your GSM/EDGE devices. The measurement application is further enhanced to support multicarrier (MC) BTS and voice services over adaptive multi-user channels on one slot (VAMOS)—allowing you to stay on the leading edge of your design and manufacturing challenges.

The GSM/EDGE/EVO measurement application is just one in a common library of more than 25 measurement applications in the Keysight Technologies, Inc. X-Series, an evolutionary approach to signal analysis that spans instrumentation, measurements, and software. The X-Series analyzers, with upgradeable CPU, memory, disk drives, and I/O ports, enable you to keep your test assets current and extend instrument longevity. Proven algorithms, 100% code-compatibility, and a common UI across the X-Series create a consistent measurement framework for signal analysis that ensures repeatable results and measurement integrity so you can leverage your test system software through all phases of product development. In addition to fixed, perpetual licenses for our X-Series measurement applications, we also offer transportable licenses which can increase the value of your investment by allowing you to transport the application to multiple X-Series analyzers.



Figure 1. Multi-slot power vs. time on mixed modulation types of GSM and EDGE burst.

Try Before You Buy!

Free 30-day trials of X-Series measurement applications provide unrestricted use of each application's features and functionality on your X-Series analyzer. Redeem a trial license online today:

www.keysight.com/find/X-Series_trial

Technology Overview

The global system for mobile communications (GSM) digital cellular standard is a time division multiple access (TDMA) channel access scheme that uses Gaussian minimum shift keying (GMSK) modulation. It uses 200 kHz RF channels, time division multiplexed, to enable up to eight users to access each carrier.

Enhanced data rates for GSM evolution (EDGE) technology is an upgrade to the GSM standard, providing higher data rates in the same frequency spectrum by using higher density modulation, $3\pi/8$ rotating 8PSK modulation. The rotation prevents symbol transitions through the origin, reducing the peak-to-average power ratio, thereby minimizing spectral re-growth and improving power efficiency. The $3\pi/8$ rotating 8PSK

is not a constant amplitude modulation; hence a standard Gaussian filter (non-linear) will distort the signal. Therefore, EDGE uses a special “linearized” version of the Gaussian filter from GSM resulting in a spectrum that is very similar to that of GSM, while minimizing non-linear distortion in the baseband signal.

EDGE Evolution or EGPRS2 is a technology to offer near-UMTS (universal mobile telecommunications system) level data throughput with more than double the spectrum efficiency. For a higher data rate, the EDGE Evolution signal configuration has normal burst (NB) and higher symbol rate (HSR) burst including new modulation formats such as QPSK, 16QAM, and 32QAM. New pulse shaping filters are defined as narrow and wide filters

for HSR. This is necessary to adjust the HSR spectrum with normal EDGE mask tests because GSM, EDGE, and EDGE Evolution will coexist in commercial services.

Now included in 3GPP Release 9 is voice services over adaptive multi-user channels on one slot (VAMOS). VAMOS can double the channel number assignment capacity of existing GSM networks by sending two sub channels on one slot. It utilizes adaptive QPSK (AQPSK), which is PSK with four state points whose positions are adjustable via a parameter Alpha.

Table 1. Key differences in GSM, EDGE, and EDGE Evolution standards

	GSM	EDGE	EDGE Evolution (EGPRS2)	
			Level A (EGPRS2-A)	Level B (EGPRS2-B)
Modulation	GMSK	$3\pi/8$ shift 8PSK	GMSK $3\pi/8$ shift 8PSK, $+\pi/4$ shift 16QAM, $-\pi/4$ shift 32QAM	$3\pi/8$ shift QPSK, $+\pi/4$ shift 16QAM, $-\pi/4$ shift 32QAM
Bits per symbol	1	3	1, 3, 4, 5	2, 4, 5
Payload per timeslot	114 bits (57+57)	348 bits (174+174)	114 bits (57+57) 348 bits (174+174) 464 bits (232+232) 580 bits (290+290)	276 bits (138+138) 552 bits (276+276) 690 bits (345+345)
Symbol rate	270.833 ksps	270.833 ksps	270.833 ksps	325 ksps
Amplitude modulation	No	Yes	Yes	Yes
Filter	Gaussian	Linearized Gaussian (EDGE)	Linearized Gaussian (EDGE)	Narrow or wide pulse shaping filter
BT	0.3	0.3	0.3	-

RF Transmitter Tests

With the X-Series signal analyzers and the GSM/EDGE/EVO measurement application, you can perform RF transmitter measurements on BTS and mobile devices in time, frequency, and modulation domains. Measure basic GSM and EDGE signals as well as EDGE Evolution signals with Level

A (normal burst) and Level B (high symbol rate) with all modulation formats and transmit filters. In addition, MC-BTS and VAMOS transmitter measurements according to Release 9 of the 3GPP standard is supported.

For mobile station (MS) high-speed manufacturing, a single acquisition combined GSM/EDGE measurement is available where the speed is up to 20 times faster than traditional one-button measurements (for details refer to Ordering Information).

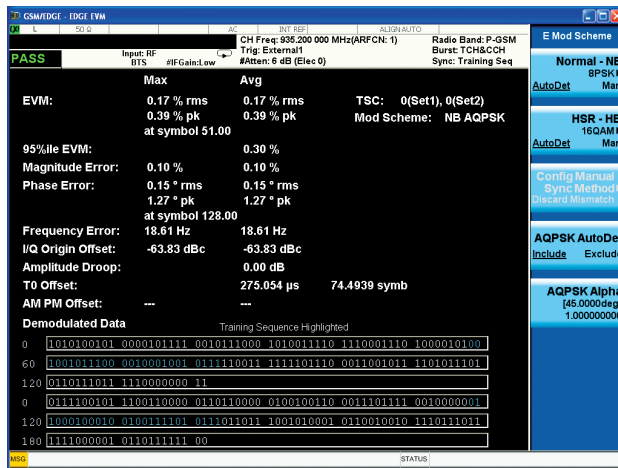


Figure 2. EVM and demodulated bits for VAMOS (AQPSK modulation) signals. Training sequences for both VAMOS sub channels are highlighted.

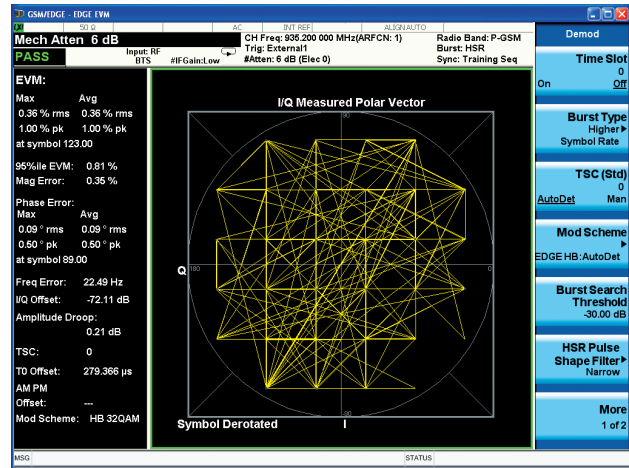


Figure 3. Constellation diagram and error summary of an HSR 32QAM EDGE Evolution signal.

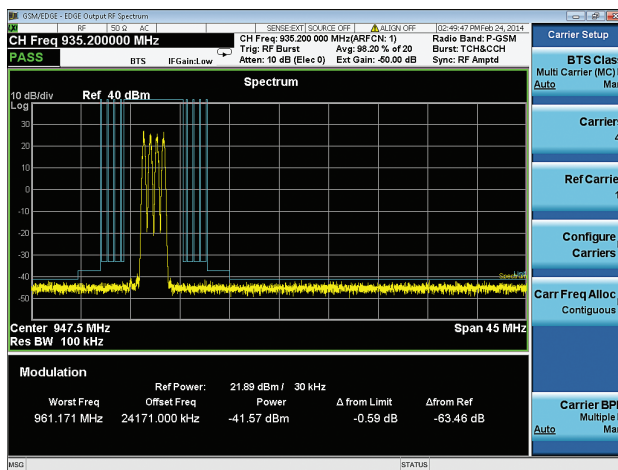


Figure 4. Multi-carrier BTS (MC-BTS) ORFS with limit mask for ORFS and up to 5th order intermodulation products. MC-BTS ORFS can also be configured for non-contiguous frequency allocation.

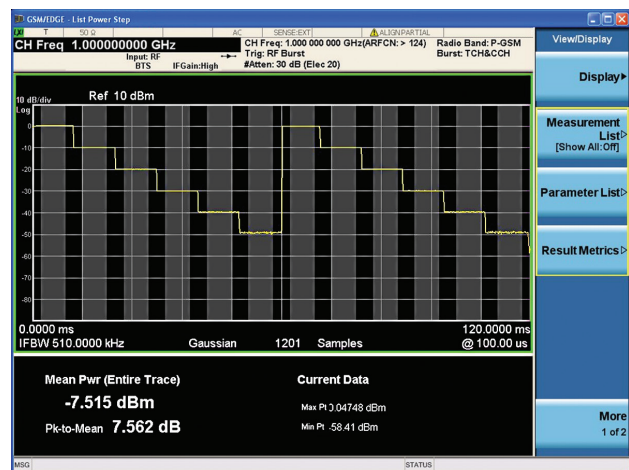


Figure 5. GSM list power step measurement for signal calibration using single acquisition combined measurement mode.

Standards-based RF transmitter test

The RF transmitter test requirements for GSM/EDGE/EDGE Evolution are defined in TS 45 and 51 series of the 3GPP standard. Table 2 shows the

required base station RF transmitter tests along with the corresponding measurement applications.

Table 2. Required BTS RF transmitter measurements and the corresponding measurements in N/W9071A and 89600 VSA software

3GPP TS.51.021 subclause	Transmitter test	N/W9071A X-Series measurement application	89600 VSA software Option AYA
6.2	Modulation accuracy	EVM	EVM
6.3	Mean transmitted RF carrier power	Transmit power	Can be performed using band power marker
6.4	Transmitted RF carrier power versus time	Power vs. time	
6.5.1	Spectrum due to modulation and wideband noise	Output RF spectrum (ORFS) due to modulation and wideband noise	
6.5.2	Switching transients spectrum	Output RF spectrum (ORFS) due to switching	
6.6.1	Conducted spurious emissions from the transmitter antenna connector, inside the	Tx band spur	
6.6.2	BTS transmit band	Spectrum analyzer mode – Spurious emissions	
6.7	Intermodulation attenuation	Spectrum analyzer mode - Spurious emissions	89600 VSA offers modulation quality measurements. For one button, non-demodulation, measurements such as ORFS and PVT, use the N/W9071A embedded application.
6.8	Intra base station system intermodulation attenuation	Spectrum analyzer mode - Spurious emissions	
6.9	Intra base station system intermodulation attenuation, MXM 850 and MXM 1900	Spectrum analyzer mode - Spurious emissions	
6.10	Intra base station system intermodulation attenuation, PCS 1900, GSM 850, GSM 700	Spectrum analyzer mode - Spurious emissions	
6.11	Intermodulation attenuation (GSM 700, GSM 850, MXM 850, PCS 1900, and MXM 1900)	Spectrum analyzer mode - Spurious emissions	
6.12	Wideband noise and intra-BSS intermodulation attenuation in multicarrier operation	MCBTS ORFS due to modulation and wideband noise. Available for both contiguous and non-contiguous frequency allocation.	

Choosing Between X-Series Applications and 89600 VSA Software

X-Series measurement applications provide embedded format-specific, one-button measurements for X-Series analyzers. With fast measurement speed, SCPI programmability, pass/fail testing and simplicity of operation, these applications are ideally suited for design verification and manufacturing. 89600 VSA software is a comprehensive set of tools for demodulation and vector signal analysis. These tools enable you to explore virtually every facet of a signal and optimize your most advanced designs. Use the 89600 VSA software with a variety of Keysight hardware platforms to pinpoint the answers to signal problems in R&D.

www.keysight.com/find/89600vsa

Measurement details

All of the RF transmitter measurements as defined by the 3GPP standard, as well as a wide range of additional measurements and analysis tools, are available with a press of a button (Table 3). These measurements are fully remote controllable

via the IEC/IEEE bus or LAN, using SCPI commands.

Analog baseband measurements are available on the PXA or MXA signal analyzer equipped with BBIQ hardware. Supported baseband measure-

ments include all of the modulation quality plus I/Q waveform measurements.

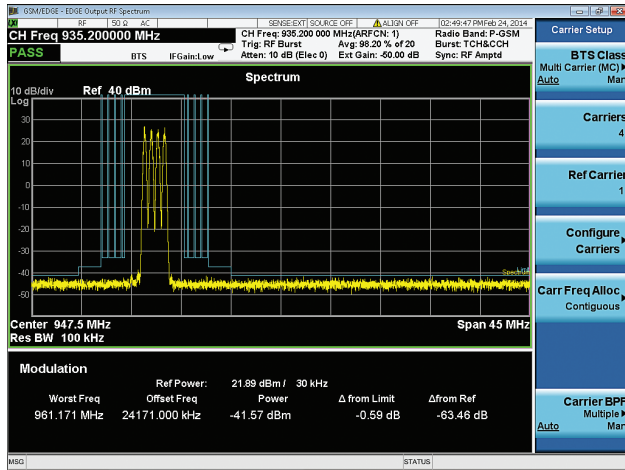


Figure 6. GSM signal view in power vs. time, real-time spectrum with frequency mask trigger and spectrogram display using RTSA option on the PXA or MXA signal analyzers.



Figure 7. Combined view of ORFS due to modulation and switching transients.

Table 3. One-button measurements provided by the N/W9071A measurement application

Technology	GSM/EDGE	EDGE Evolution Level A (EGPRS2-A) Level B (EGPRS2-B)	VAMOS (AQPSK)	Single Carrier BTS	MC BTS Single Carrier active	MC BTS Multicarrier active for contiguous and non-contiguous frequency allocation	MS
Measurements							
EVM	●	●	●	●	●	○	●
RMS EVM	●	●	●	●	●	○	●
Peak EVM	●	●	●	●	●	○	●
95% EVM	●	●	●	●	●	○	●
Frequency error	●	●	●	●	●	○	●
Phase error	●	●	●	●	●	○	●
Magnitude error	●	●	●	●	●	○	●
I/Q origin offset	●	●	●	●	●	○	●
TO offset	●	●	●	●	●	○	●
AM PM offset	●	●	●	●	●	○	●
Transmit power	●	●	●	●	●	○	●
Power vs. time	●	●	●	●	●	○	●
Output RF spectrum							
Due to modulation and wideband noise	●	●	●	●	●	●	●
Due to switching transients	●	●	●	●	●	●	●
In-band Tx band spur	●	●	●	●	(*1)	(*2)	n/a

Notes: ○ Supported, but focused on one carrier measurement at a time
 (*1) Use output RF spectrum in single carrier operation
 (*2) Use output RF spectrum in multicarrier operation

Single acquisition combined measurements

The N9071A-XFP single acquisition combined GSM/EDGE measurement application is for high-speed manufacturing of GSM/EDGE mobile phone transmitters, wireless components, such as power amplifiers, and low-cost pico/femtocell base stations. Used with the MXA and EXA signal analyzers, it provides up to 20 times speed improvement compared to traditional one-button measurements for list power step, phase and frequency error (PFER), EDGE EVM, PVT, ORFS, marker measurements, and harmonics.

Single Acquisition

Contains one continuous block of captured data collected using predefined capture settings. The capture period can be defined by test engineers to suit the requirements for specific device tests, for example, the number of GSM bursts required to provide the engineer with enough data to ensure a good measurement on the DUT.

Combined Measurements

Implies that the measurement sequence performed by the analyzer can accommodate any mix of transmitter power measurements and modulation quality measurements performed on the data collected within the capture period.

Key Specifications

Definitions

- Specifications describe the performance of parameters.
- 95th percentile values indicate the breadth of the population ($\approx 2\sigma$) of performance tolerances expected to be met in 95% of cases with a 95% confidence.
- Typical values are designated with the abbreviation "typ." These are performance beyond specification that 80% of the units exhibit with a 95% confidence.
- Nominal values are designated with the abbreviation "nom." These values indicate expected performance, or describe product performance that is useful in the application of the product.

Note: Data subject to change

Supported devices and standards

Device type	BTS, MS
Standard version	Mobile station: 3GPP TS 51.010-1 v.10.0.0 (2012-03) Base station: 3GPP TS51.021 v.10.7.0 (2012-11)
BTS type	Normal, Micro1, Micro2, Micro3, Pico
Radio band	P-GSM 900, E-GSM 900, R-GSM 900, DCS1800, PCS1900, GSM 850, T-GSM 810, GSM 700, GSM 480, GSM 450

For a complete list of specifications refer to the appropriate specifications guide.

PXA: www.keysight.com/find/pxa_specifications
 MXA: www.keysight.com/find/mxa_specifications
 EXA: www.keysight.com/find/exa_specifications
 CXA: www.keysight.com/find/cxa_specifications

Performance specifications

Description	PXA	MXA	EXA	CXA ¹
EDGE error vector magnitude (EVM)^{2,3}				
Carrier power range at RF input	+24 to -45 dBm (nom)	+24 to -45 dBm (nom)	+24 to -45 dBm (nom)	+24 to -45 dBm (nom)
EVM, rms				
Operating range	0 to 20% (nom)	0 to 20% (nom)	0 to 20% (nom)	0 to 20% (nom)
Floor	0.6 (0.4% nom)	0.6 (0.5% nom)	0.7 (0.5% nom)	0.7 (0.5% nom)
Floor (Baseband IQ Input)	0.5% (nom)	0.5% (nom)	n/a	n/a
Accuracy conditions: EVM range 1 to 10% (NSR 8 PSK); EVM range 1 to 6% (NSR 16QAM/32QAM); EVM range 1 to 8% (HSR QPSK); EVM range 1 to 5% (HSR 16QAM/32QAM)				
	± 0.5%	± 0.5%	± 0.5%	± 0.5%
Frequency error				
Initial frequency error range	± 80 kHz (nom)	± 80 kHz (nom)	± 80 kHz (nom)	± 80 kHz (nom)
Accuracy	± 5 Hz + tfa ⁴	± 5 Hz + tfa ⁴	± 5 Hz + tfa ⁴	± 5 Hz + tfa ⁴

1. When the margin between this performance level and 3GPP requirements is not adequate, it may not test against the 3GPP test limits.
2. Specifications based on 200 bursts.
3. $3\pi/8$ shifted 8PSK, $3\pi/8$ shifted QPSK, $\pi/4$ shifted 16QAM, $-\pi/4$ shifted 32QAM modulation in NSR/HSR with pulse shaping filter
4. tfa = transmitter frequency x frequency reference accuracy

Description	PXA	MXA	EXA	CXA
IQ origin offset				
DUT maximum offset	-15 dBc (nom)	-15 dBc (nom)	-15 dBc (nom)	-15 dBc (nom)
Maximum analyzer noise floor	-50 dBc (nom)	-50 dBc (nom)	-50 dBc (nom)	-50 dBc (nom)
Trigger to T0 time offset				
Relative accuracy	± 5.0 ns (nom)	± 5.0 ns (nom)	± 5.0 ns (nom)	± 5.0 ns (nom)
Phase and frequency error (GMSK modulation)¹				
Carrier power range at RF input	+27 to -45 dBm (nom)	+27 to -45 dBm (nom)	+27 to -45 dBm (nom)	+27 to -45 dBm (nom)
Phase error, rms				
Floor	0.5°	0.5°	0.6°	0.6°
Floor (baseband IQ input)	0.3° (nom)	0.3° (nom)	n/a	n/a
Accuracy				
Phase error range 1° to 6°	± 0.3°	± 0.3°	± 0.3°	± 0.3°
Frequency error				
Initial frequency error range	± 80 kHz (nom)	± 80 kHz (nom)	± 80 kHz (nom)	± 80 kHz (nom)
Accuracy	± 5 Hz + tfa ²	± 5 Hz + tfa ²	± 5 Hz + tfa ²	± 5 Hz + tfa ²
IQ origin offset				
DUT maximum offset	-15 dBc (nom)	-15 dBc (nom)	-15 dBc (nom)	-15 dBc (nom)
Analyzer noise floor	-50 dBc (nom)	-50 dBc (nom)	-50 dBc (nom)	-50 dBc (nom)
Trigger to T0 time offset				
Relative accuracy	± 5.0 ns (nom)	± 5.0 ns (nom)	± 5.0 ns (nom)	± 5.0 ns (nom)
Power vs. time (GSM/EDGE/EDGE Evolution)				
Minimum carrier power at RF input	-35 dBm (nom)	-35 dBm (nom)	-35 dBm (nom)	-35 dBm (nom)
Absolute power accuracy for in-band signal (excluding mismatch error)	-0.11 ± 0.19 dB (95%)	-0.11 ± 0.23 dB (95%)	-0.11 ± 0.27 dB (95%)	-0.11 ± 0.60 dB (95%)
Power ramp relative accuracy (referenced to mean transmitted power)				
Accuracy	± 0.11 dB	± 0.11 dB	± 0.16 dB	± 0.31 dB
Measurement floor	-95 dBm	-92 dBm	-89 dBm	-84 dBm
Output RF spectrum (ORFS)				
Minimum carrier power at RF input	-20 dBm (nom)	-20 dBm (nom)	-20 dBm (nom)	-20 dBm (nom)
ORFS relative RF power uncertainty				
Due to modulation				
Offsets ≤ 1.2 MHz	± 0.09 dB	± 0.16 dB	± 0.26 dB	± 0.54 dB
Offsets ≥ 1.8 MHz	± 0.11 dB	± 0.18 dB	± 0.27 dB	± 0.95 dB
Due to switching				
	± 0.09 dB (nom)	± 0.12 dB (nom)	± 0.17 dB (nom)	± 0.36 dB (nom)
ORFS absolute RF power accuracy	± 0.19 dB (95%)	± 0.23 dB (95%)	± 0.27 dB (95%)	± 0.62 dB (95%)
GSM (GMSK): Dynamic range, spectrum due to modulation³				
Offset frequency				
100 kHz	70.2 dB	63.8 dB ⁴	63.7 dB ⁵	53.1 dB ⁶
200 kHz	77.4 dB	70.0 dB ⁴	69.5 dB ⁵	59.9 dB ⁶
250 kHz	79.6 dB	72.0 dB ⁴	71.4 dB ⁵	62.1 dB ⁶
400 kHz	83.6 dB	76.0 dB ⁴	75.0 dB ⁵	66.5 dB ⁶
600 kHz	86.2 (87.4 dB typ)	79.1 dB (80.8 dB typ) ⁴	77.6 dB (80.7 dB typ) ⁵	70.1 dB ⁶ (72.2 dB typ)
1.2 MHz	88.1 (90.3 dB typ)	82.7 dB (85.0 dB typ) ⁴	80.7 dB (83.7 dB typ) ⁵	74.3 dB ⁶ (77.0 dB typ)
1.8 MHz	90.7 (91.9 dB nom)	81.8 dB (83.2 dB nom) ⁴	81.3 dB (84.7 dB nom) ⁴	70.1 dB ⁶ (73.6 dB nom)
6.0 MHz	92.5 (94.5 dB nom)	86.4 dB (88.5 dB nom) ⁴	84.1 dB (88.1 dB nom) ⁴	72.0 dB ⁶ (77.3 dB nom)

1. Specifications based on 200 bursts.

2. tfa = transmitter frequency x frequency reference accuracy

3. 5-pole sync-tuned filters; methods: direct time and FFT

4. ORFS dynamic range specification for MXA is for instruments with serial number prefix ≥ MY/SG/US5233 (those instruments ship standard with N9020A-EP2 as the identifier). Refer to the GSM/EDGE chapter for the MXA specification guide for specification on the other MXA: www.keysight.com/find/mxa_specifications. For MXA, phase noise optimization is set to Best Wide offset (offset > 100 kHz)

5. ORFS dynamic range specification for EXA is for instruments with serial number prefix ≥ MY/SG/US5340 (those instruments ship standard with N9010A-EP3 as the identifier). Refer to the GSM/EDGE chapter for the EXA specification guide for specification on the other EXA: www.keysight.com/find/exa_specifications. For EXA, phase noise optimization is set to Best Wide offset (offset > 100 kHz)

6. ORFS dynamic range specification for CXA is for instruments with serial number prefix ≥ MY/SG/US5423 (those instruments ship standard with N9000A-EP4 as the identifier). Refer to the GSM/EDGE chapter for the CXA specification guide for specification on the other CXA: www.keysight.com/find/cxa_specifications. For CXA, phase noise optimization is set to Best Wide offset (offset > 100 kHz)

Description	PXA	MXA	EXA	CXA
GSM (GMSK): Dynamic range, spectrum due to switching¹				
Offset frequency				
400 kHz	80.7 dB	73.7 dB ²	72.5 dB ³	64.4 dB ⁵
600 kHz	82.4 dB	76.4 dB ²	74.6 dB ³	67.6 dB ⁵
1.2 MHz	83.5 dB	79.1 dB ²	76.6 dB ³	70.9 dB ⁵
1.8 MHz	92.3 dB	84.7 dB ²	83.7 dB ³	71.6 dB ⁵
EDGE (NSR 8PSK and narrow QPSK): Dynamic range, spectrum due to modulation⁴				
Offset frequency				
100 kHz	70.2 dB	63.8 dB ²	63.9 dB ³	53.1 dB ⁵
200 kHz	77.1 dB	69.9 dB ²	69.3 dB ³	59.8 dB ⁵
250 kHz	79.1 dB	71.8 dB ²	71.0 dB ³	62.0 dB ⁵
400 kHz	82.4 dB	75.5 dB ²	74.2 dB ³	66.2 dB ⁵
600 kHz	84.2 (85.9 dB typ)	78.2 dB (80.3 dB typ) ²	76.4 dB (79.5 dB typ) ³	69.4 dB ⁵ (71.9 dB typ)
1.2 MHz	85.3 (87.7 dB typ)	80.9 dB (83.7 dB typ) ²	78.4 dB (81.5 dB typ) ³	72.7 dB ⁵ (76.2 dB typ)
1.8 MHz	88.8 (90.5 dB nom)	81.3 dB (82.9 dB nom) ²	80.3 dB (83.7 dB nom) ³	68.1 dB ⁵ (72.4 dB nom)
6.0 MHz	89.9 (92.3 dB nom)	84.9 dB (87.5 dB nom) ²	82.3 dB (86.2 dB nom) ³	69.2 dB ⁵ (74.8 dB nom)
EDGE (NSR 8PSK and narrow QPSK): Dynamic range, spectrum due to switching¹				
Offset frequency				
400 kHz	80.7 dB	73.7 dB ²	72.5 dB ³	64.4 dB ⁵
600 kHz	82.4 dB	76.4 dB ²	74.6 dB ³	67.6 dB ⁵
1.2 MHz	83.5 dB	79.1 dB ²	76.6 dB ³	70.9 dB ⁵
1.8 MHz	92.3 dB	84.7 dB ²	83.7 dB ³	71.6 dB ⁵
EDGE (NSR 16/32QAM; HSR QPSK/16QAM/32QAM) Dynamic range, spectrum due to modulation⁴				
Offset frequency				
100 kHz	70.0 dB	63.7 dB ²	63.5 dB ³	53.1 dB ⁵
200 kHz	76.4 dB	69.6 dB ²	68.8 dB ³	59.7 dB ⁵
250 kHz	78.1 dB	71.4 dB ²	70.3 dB ³	61.7 dB ⁵
400 kHz	80.5 dB	74.6 dB ²	72.9 dB ³	65.5 dB ⁵
600 kHz	81.5 (83.6 dB typ)	76.6 dB (79.8 dB typ) ²	74.3 dB (77.5 dB typ) ³	68.1 dB ⁵ (71.3 dB typ)
1.2 MHz	82.1 (84.6 dB typ)	78.3 dB (82.1 dB typ) ²	75.5 dB (78.7 dB typ) ³	70.3 dB ⁵ (74.4 dB typ)
1.8 MHz	86.2 (88.4 dB nom)	80.1 dB (84.0 dB nom) ²	78.6 dB (82.1 dB nom) ³	65.5 dB ⁵ (70.4 dB nom)
6.0 MHz	86.8 (89.4 dB nom)	82.6 dB (86.7 dB nom) ²	79.8 dB (83.6 dB nom) ³	66.0 dB ⁵ (71.8 dB nom)
EDGE (NSR 16/32QAM; HSR QPSK/16QAM/32QAM) Dynamic range, spectrum due to switching¹				
Offset frequency				
400 kHz	79.7 dB	73.3 dB ²	71.8 dB ³	64.1 dB ⁵
600 kHz	81.1 dB	75.7 dB ²	73.6 dB ³	67.0 dB ⁵
1.2 MHz	81.9 dB	77.8 dB ²	75.1 dB ³	69.8 dB ⁵
1.8 MHz	91.0 dB	84.2 dB ²	82.9 dB ³	70.3 dB ⁵

1. 5-pole sync-tuned filters

2. ORFS dynamic range specification for MXA is for instruments with serial number prefix \geq MY/SG/US5233 (those instruments ship standard with N9020A-EP2 as the identifier). Refer to the GSM/EDGE chapter for the MXA specification guide for specification on the other MXA: www.keysight.com/find/mxa_specifications. For MXA, phase noise optimization is set to Best Wide offset (offset > 100 kHz)3. ORFS dynamic range specification for EXA is for instruments with serial number prefix \geq MY/SG/US5340 (those instruments ship standard with N9010A-EP3 as the identifier). Refer to the GSM/EDGE chapter for the EXA specification guide for specification on the other EXA: www.keysight.com/find/exa_specifications. For EXA, phase noise optimization is set to Best Wide offset (offset > 100 kHz)

4. 5-pole sync-tuned filters; methods: direct time and FFT

5. ORFS dynamic range specification for CXA is for instruments with serial number prefix \geq MY/SG/US5423 (those instruments ship standard with N9000A-EP4 as the identifier). Refer to the GSM/EDGE chapter for the CXA specification guide for specification on the other CXA: www.keysight.com/find/cxa_specifications. For CXA, phase noise optimization is set to Best Wide offset (offset > 100 kHz)

Ordering Information

Software licensing and configuration

Choose from two license types:

- **Fixed, perpetual license:**
This allows you to run the application in the X-Series analyzer in which it is initially installed.
- **Transportable, perpetual license:**
This allows you to run the application in the X-Series analyzer in which it is initially installed, plus it may be transferred from one X-Series analyzer to another.

The table below contains information on our fixed, perpetual licenses. For more information, please visit the product web pages.

You Can Upgrade!

Options can be added after your initial purchase.

All of our X-Series application options are license-key upgradeable.



X-Series Measurement Application Updates

To update a previously purchased N9071A/W9071A measurement application to include the latest feature updates, you can purchase the N9071A-MEU or W9071A-MEU minor enhancement update.

For more information, visit:

www.keysight.com/find/N9071A-MEU for PXA, MXA, EXA

www.keysight.com/find/W9071A-MEU for CXA

N9071A & W9071A GSM/EDGE/EVO X-Series measurement application

Description	Model-Option	Model-Option	Additional information
	PXA, MXA, EXA	CXA/CXA-m ¹	
GSM/EDGE	N9071A-2FP	W9071A-2FP	
EDGE Evo	N9071A-3FP	W9071A-3FP	Requires 2FP
Single acquisition combined GSM/EDGE	N9071A-XFP		MXA and EXA only; requires 2FP

1. The CXA-m only supports transportable license. Visit the product web page for further information.

Hardware configuration

N9030A PXA signal analyzer

Description	Model-Option	Additional information
3.6, 8.4, 13.6, 26.5, 43, 44, or 50 GHz frequency range	N9030A-503, -508, -513, -526, -543, -544, or -550	One required
Analog baseband IQ (BBIQ) inputs	N9030A-BBA	Required for analog baseband measurement
Precision frequency reference	N9030A-PFR	Recommended
Electronic attenuator, 3.6 GHz	N9030A-EA3	Recommended
Preamplifier, 3.6, 8.4, 13.6, 26.5, 43, 44, or 50 GHz	N9030A-P03, -P08, -P13, -P26, -P43, -P44, or -P50	One recommended

N9020A MXA signal analyzer

Description	Model-Option	Additional information
3.6, 8.4, 13.6, or 26.5 GHz frequency range	N9020A-503, -508, -513, or -526	One required
Analog baseband IQ (BBIQ) inputs	N9020A-BBA	Required for analog baseband measurement
Precision frequency reference	N9020A-PFR	Recommended
Electronic attenuator, 3.6 GHz	N9020A-EA3	Recommended
Preamplifier, 3.6, 8.4, 13.6, or 26.5 GHz	N9020A-P03, -P08, -P13, or -P26	One recommended

N9010A EXA signal analyzer

Description	Model-Option	Additional information
3.6, 7.0, 13.6, 26.5, 32, or 44 GHz frequency range	N9010A-503, -507, -513, -526, 532, or 544	One required
Precision frequency reference	N9010A-PFR	Recommended
Fine step attenuator	N9010A-FSA	Recommended
Electronic attenuator, 3.6 GHz	N9010A-EA3	Recommended
Preamplifier, 3.6, 7.0, 13.6, 26.5, 32, or 44 GHz	N9010A-P03, -P07, -P13, -P26 -P32, or -P44	One recommended

N9000A CXA signal analyzer

Description	Model-Option	Additional information
3.0, 7.5, 13.6, or 26.5 GHz frequency range	N9000A-503, -507, -513, or -526	One required
Precision frequency reference	N9000A-PFR	Recommended
Fine step attenuator	N9000A-FSA	Recommended
Preamplifier, 3.0, 7.5, 13.6, or 26.5 GHz	N9000A-P03, -P07, -P13, or -P26	One recommended

Related Literature

N9071A & W9071A GSM/EDGE/EDGE Evolution, Self-Guided Demonstration, literature number 5990-5927EN

N9080A & W9080A LTE Measurement Application Measurement Guide, Part Number N9080-90006

N9071A & W9071A GSM/EDGE/EDGE Evolution, Measurement Guide, Part Number N9071-90016

Understanding GSM/EDGE Transmitter and Receiver Measurements for Base Transceiver Stations and their Components, Application Note, literature number 5968-2320E

Measuring EDGE Signals – New and Modified Techniques and Measurement Requirements, Application Note 1361, literature number 5980-2508EN

User's and Programmer's Reference Guide is available in the library section of the N9071A and W9071A product pages.

Web

Product page:

www.keysight.com/find/n9071a

www.keysight.com/find/w9071a

X-Series measurement applications:

www.keysight.com/find/X-Series_Apps

X-Series signal analyzers:

www.keysight.com/find/X-Series

Application pages:

www.keysight.com/find/cellular

Evolving Since 1939

Our unique combination of hardware, software, services, and people can help you reach your next breakthrough. We are unlocking the future of technology.

From Hewlett-Packard to Agilent to Keysight.



For more information on Keysight Technologies' products, applications or services, please contact your local Keysight office. The complete list is available at: www.keysight.com/find/contactus

Americas

Canada	(877) 894 4414
Brazil	55 11 3351 7010
Mexico	001 800 254 2440
United States	(800) 829 4444

Asia Pacific

Australia	1 800 629 485
China	800 810 0189
Hong Kong	800 938 693
India	1 800 11 2626
Japan	0120 (421) 345
Korea	080 769 0800
Malaysia	1 800 888 848
Singapore	1 800 375 8100
Taiwan	0800 047 866
Other AP Countries	(65) 6375 8100

Europe & Middle East

Austria	0800 001122
Belgium	0800 58580
Finland	0800 523252
France	0805 980333
Germany	0800 6270999
Ireland	1800 832700
Israel	1 809 343051
Italy	800 599100
Luxembourg	+32 800 58580
Netherlands	0800 0233200
Russia	8800 5009286
Spain	800 000154
Sweden	0200 882255
Switzerland	0800 805353
	Opt. 1 (DE)
	Opt. 2 (FR)
	Opt. 3 (IT)
United Kingdom	0800 0260637

For other unlisted countries: www.keysight.com/find/contactus (BP-9-7-17)

DEKRA Certified
ISO 9001 Quality Management System

www.keysight.com/go/quality
Keysight Technologies, Inc.
DEKRA Certified ISO 9001:2015
Quality Management System

myKeysight

myKeysight

www.keysight.com/find/mykeysight

A personalized view into the information most relevant to you.

http://www.keysight.com/find/emt_product_registration

Register your products to get up-to-date product information and find warranty information.

KEYSIGHT SERVICES

Accelerate Technology Adoption.
Lower costs.

Keysight Services

www.keysight.com/find/service

Keysight Services can help from acquisition to renewal across your instrument's lifecycle. Our comprehensive service offerings—one-stop calibration, repair, asset management, technology refresh, consulting, training and more—helps you improve product quality and lower costs.



Keysight Assurance Plans

www.keysight.com/find/AssurancePlans

Up to ten years of protection and no budgetary surprises to ensure your instruments are operating to specification, so you can rely on accurate measurements.

Keysight Channel Partners

www.keysight.com/find/channelpartners

Get the best of both worlds: Keysight's measurement expertise and product breadth, combined with channel partner convenience.

